



LAMINATED TIMBER SOLUTIONS



"Wood plays a major role in combating climate change ... Trees reduce carbon dioxide in the atmosphere, as one cubic metre of wood absorbs one tonne of CO₂ ... Greater use of wood products will stimulate the expansion of Europe's forests and reduce greenhouse gas emissions by substituting for fossil fuel intensive products. The Commission is examining ways to encourage these trends."

European Commission's DG Enterprise, 2003

Our companies are active in engineering, design, production and construction of glulam timber structures and CLT.

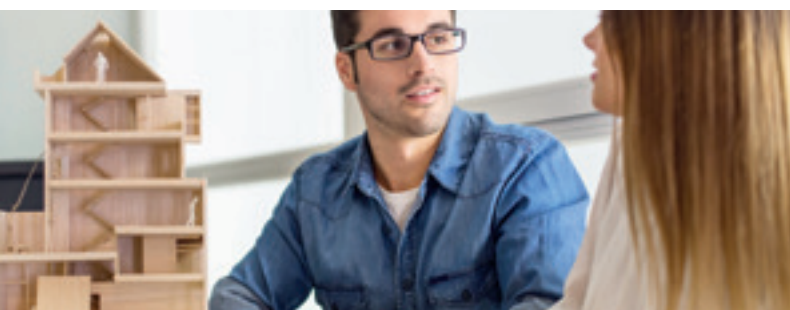
Many years of experience with the product and the continuing drive to follow both technical and architectural evolution, make that our companies are market leaders in the industry.

We focus our activities on construction companies, architects, real estate and other professional clients.



MODEL HOUSE CLT

- € 0 energy consumption on yearly basis
- E-level -14
- in cooperation with UGent and Groep III architects
- possible to visit by appointment



DESIGN & ENGINEERING

- engineers and technicians
- advise, calculations, ...
- design- and execution drawings
- BIM ready



PRODUCTION

- CNC production process
- high size accuracy
- most stringent quality requirements
- in a continuous and controlled environment



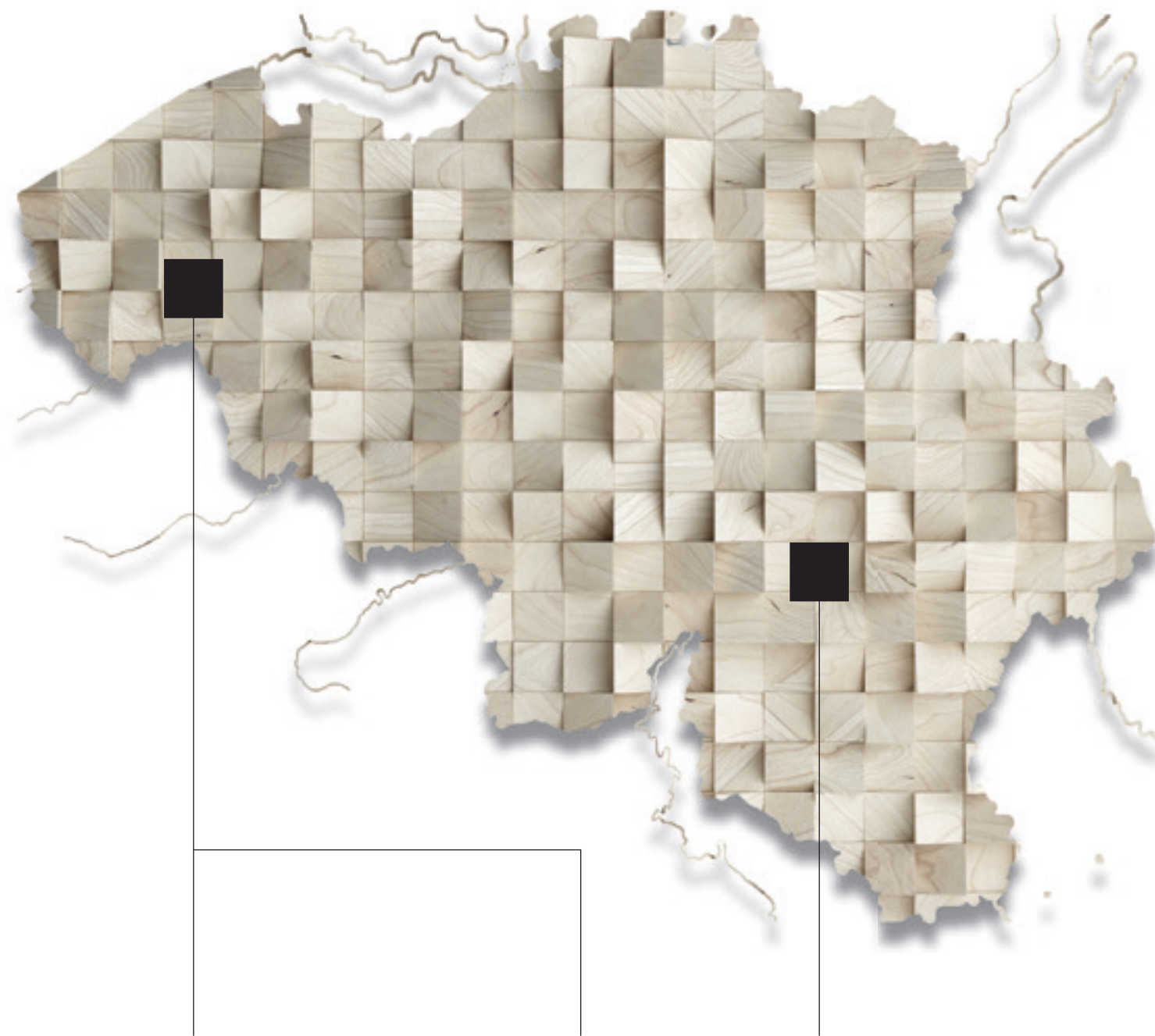
TRANSPORT

- experience in preparation and methods
- standard and exceptional transports



CONSTRUCTION

- site managers and construction teams
- efficiency guaranteed during building process



Industrial construction

Breulstraat 111
8890 Moorslede
T +32 51 78 00 33
F +32 51 77 12 85
sales@spanbo.be



Glulam timber constructions
Buildinx CLT
Kielsteg®

Breulstraat 111
8890 Moorslede
T +32 51 78 88 88
F +32 51 78 88 89
sales@korlam.be

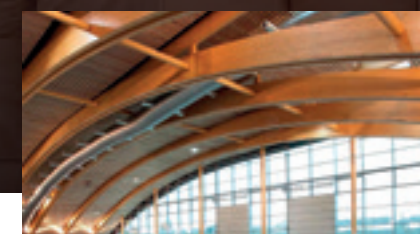


Glulam timber constructions
Buildinx CLT
Kielsteg®

Z.I. Aux Minières 12
6900 Marche-en-Famenne
T +32 84 31 52 74
F +32 84 31 63 61
sales@lamcol.be



LAMINATED TIMBER SOLUTIONS





PRODUCT

glulam timber structures

USE

- beams
- columns
- rafters
- trusses

APPLICATIONS

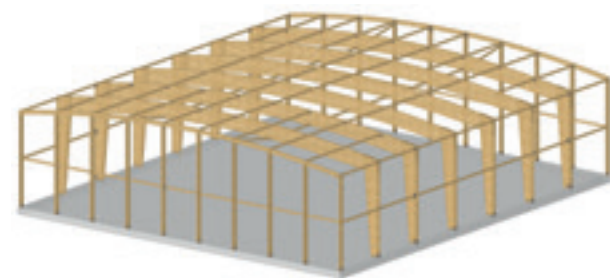
- DIY and retail
- exposition halls and warehouses
- ice skating rinks
- industrial construction
- manure- and compost halls
- salt storage
- sports halls
- swimming pool structures

CHARACTERISTICS

- bended shapes
- broad architectural freedom
- combines aesthetics and stability
- easy fixation of secondary elements
- free of maintenance when used in normal interior climate
- free spans up to 42 metres
- good fire resistance
- good resistance against chemical influences
- lightweight

CERTIFICATES

CE, ATG, KOMO, FSC, PEFC



PRODUCT

cross laminated timber (CLT)

USE

- floors
- roofs
- walls

APPLICATIONS

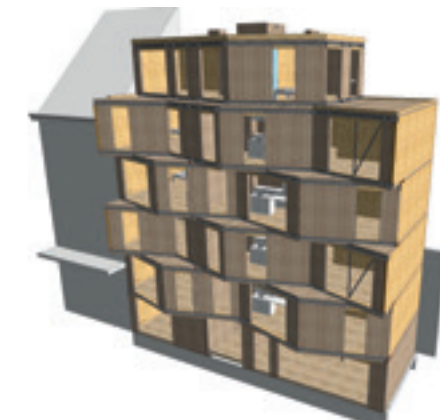
- childcare
- commercial
- health care
- industrial construction
- modular units
- offices
- public buildings
- real estate
- residential
- schools

CHARACTERISTICS

- combines aesthetics and stability
- different surface finishings
- dry building method
- good fire resistance
- highly suitable for high-rise construction
- lightweight
- very rapid construction time
- wind- and airtight

CERTIFICATES

CE, EOTA, DIBt, PEFC



PRODUCT

innovative timber construction element for large, wide spans and cantilevers

USE

- floors
- roofs

APPLICATIONS

- childcare
- commercial
- health care
- industrial construction
- offices
- public buildings
- real estate
- residential
- schools

CHARACTERISTICS

- cantilevers up to 10 metres
- combines aesthetics and stability
- dry building method
- free spans up to 27 metres
- good fire resistance
- lightweight
- unique, licensed product
- very rapid construction time

CERTIFICATES

CE (ongoing), DiBt, PEFC

